

CYTOGENETIC ANALYSIS REPORT

Principal Investigator:	JOHN DOE, Ph.D.	Cytogenetics Number:	CL-XXXX
Submitted By:	JANE POSTDOC	Customer Specimen ID:	XXXXXX
		Passage Date:	6/13/2014
		Received Date:	6/14/2014
		Reported Date:	6/15/2014

Results: 46,XX ; FEMALE KARYOTYPE

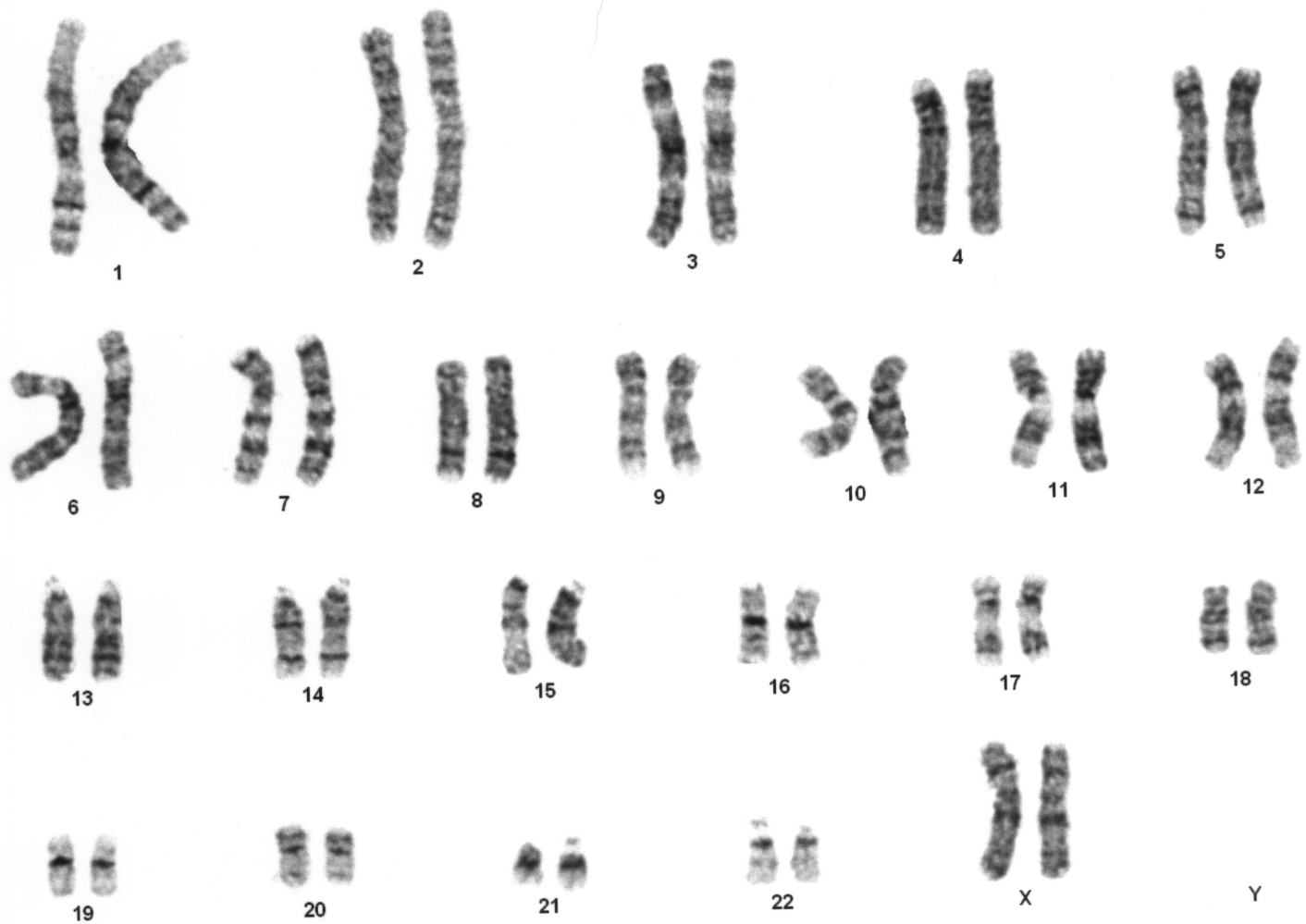
INTERPRETATION: G-banded chromosome analysis of thirty metaphase cells showed an apparently normal female karyotype. There were nonclonal abnormalities seen in three cells: one showing loss of chromosome 3, the second showing loss of chromosome 6, and the third showing a deletion on the short arm of chromosome 8.

Metaphases Counted:	30	Banding Technique:	G-BANDS
Metaphases Analyzed:	28	Banding Level:	450-500
Metaphases Karyotyped:	2	Cultures Established:	1
Metaphase Partials:	0		

We will exercise our best efforts to accurately analyze the chromosome karyotypes of this specimen. However, the level of resolution in this G-banded analysis does not exclude the presence of small structural abnormalities.

Reviewed By: _____
INDIRA MEHTA, Ph.D.

JOHN DOE, Ph.D.
125 STREET AVE
ROOM 101
CITY, ST 11111



46,XX

